



NORTHEAST KS



*the*  
*Last Drop*  
A FOSTER VILLAGE GALA

# 2026 GALA SPONSORSHIP OPPORTUNITIES

Join us Friday, July 31, 2026 for an inspiring evening to rally support for children and families whose lives intertwine with the foster care system.

July 31, 2026

Maceli's - Lawrence, Kansas

**\$7,500 - sold out**

## MAIN SQUEEZE - PRESENTING SPONSOR

- Two VIP tables of 8 seats each
- Company name and logo on live auction paddles, invitations, event signage, and table centerpiece
- Recognition on social media platforms
- Recognition on gala website
- Recognition in newsletter
- Full-page recognition in event program
- Presenting sponsor will be announced by Emcee during event
- Logo prominently displayed on screens during program, dinner, and cocktail hour

**\$5,000**

## ZEST IN SHOW

- One VIP table of 8 seats
- Company name and logo on invitations, event signage, and table centerpiece
- Recognition on social media platforms
- Recognition on gala website
- Recognition in newsletter
- Half-page recognition in event program
- Sponsor will be announced by Emcee during event
- Logo prominently displayed on screens during program, dinner, and cocktail hour

**\$2,500**

## SQUEEZE THE DAY

- Half table
- Company name displayed in event program
- Recognition on gala website
- Recognition in newsletter
- Recognition in event program
- Sponsor announced by Emcee during event

**\$1,000**

## PEELING GOOD

- Tickets for 2 guests
- Recognition in event program and on gala website

**\$500**

## THE CITRUS CIRCLE

- Recognition in event program

*More ways to support*



develop a lemon cocktail & donate proceeds



host a lemonade stand at your business



add a lemon dessert to your menu

*Reach out to our team - we're happy to help*



NORTHEAST KS

[lemonade@fostervillagenortheastks.org](mailto:lemonade@fostervillagenortheastks.org)

# Who we are...

What originally started as Foster Village Lawrence quickly grew beyond city lines. In 2023, we became Foster Village Northeast KS, an independent 501(c)(3) nonprofit serving families in Douglas, Franklin, Jefferson, Leavenworth, Osage, Jackson, and Shawnee counties.



## Our Mission

To come alongside children and families in the child welfare system and show them that they are not alone.

90% of surveyed foster and kinship families report that the services provided by Foster Village were a sustaining factor in their ability to continue fostering.

## About

Foster parents often feel tired and alone. Most families foster for less than a year, citing burnout and lack of support as the reason they stop. At the same time, 85% of people who are not foster parents say they care about vulnerable children and want to help.

Foster Village bridges this gap between foster families and caregivers and those who want to help, meeting practical needs and providing holistic support beyond the system.

# Our Impact

Each of these numbers represent real families finding connection, relief, and encouragement through Foster Village Northeast KS.

**SUPPORTING  
7 COUNTIES  
ACROSS  
NORTHEAST  
KANSAS**



**473** FAMILIES  
SERVED

including Welcome Packs, Family Fun Nights, Support Groups and Caregiver Nights Out

**140** WELCOME  
PACKS

Provided essential supply packs to families welcoming children into their homes.

**66** FAMILIES  
ATTENDED CNO

Gave families a night of respite while kids enjoyed fun, engaging activities.

**360** VILLAGE  
VOLUNTEERS

showed up in numbers to support families and kids whose lives are impacted by foster care

**26** DADS NIGHT  
MOMENTS

Created space for support moments for dads to build community and find support.

**223** MOMS SUPPORT  
GROUP MOMENTS

Facilitated support moments for moms navigating the foster care journey through connection and resources.

# Our goals

In 2026, Foster Village will strengthen its impact in Northeast Kansas by building deeper community roots, increasing access to practical and relational support, and expanding capacity to walk alongside foster and kinship families with dignity and care. We will focus on growing a strong local presence in Topeka, establishing the infrastructure needed to support consistent programming, and expanding educational, volunteer, and resource networks that ensure families feel seen, equipped, and not alone. By investing in both the people we serve and the systems that support them, Foster Village will cultivate a resilient foundation that sustains our mission well into the future.



## Strengthen Family Support & Education

- Host workshops and training sessions on topics relevant to foster and kinship care.
- Provide at least four continuing education webinars annually for foster caregivers.
- Invite volunteers to educational trainings to strengthen trauma-informed service culture.
- Formalize referral partnerships to expand access to ongoing therapy support



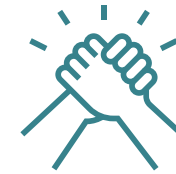
## Enhance Resources & Infrastructure

- Assess needs and feasibility for securing a dedicated space in Topeka.
- Develop a plan for acquisition, lease, or partnership, with a target of securing space by 2027.
- Grow volunteer capacity, including:
  - Expanding Welcome Pack delivery teams in Shawnee and Leavenworth Counties.
  - Building consistency in childcare volunteer teams through structured leadership and training.



## Expand Community Engagement & Advocacy in Topeka

- Identify and empower a core group of existing supporters to lead local engagement.
- Host outreach and informational events to cultivate new volunteers, partners, and donors.
- Develop intentional local storytelling and awareness strategies.



## Support for Kinship and Foster Caregivers

- Expand tangible support beyond Welcome Packs, establishing sustainable funding and clear program guidelines.
- Offer targeted educational opportunities (support groups, caregiver-specific workshops).
- Provide one-on-one navigation assistance to reduce barriers and increase access to resources and licensing.
- Grow partnerships that increase mental health access (e.g., through Project SOOThe referral pathways).